

Daily T-Jet3™ Maintenance Procedures

March 2007 Ver1.1

As a T-Jet3 owner there is daily maintenance that will need to be performed to ensure proper operation of your printer. By not following the required daily maintenance described below you will void your T-Jet3 warranty as well as damage the machine.

If you have any questions regarding any of the following steps please contact U.S. Screen Print & Inkjet Technology Technical Support:

Toll Free +1 888-MYTJETS (698-5387)
Technical Support +1 480-929-2937
Email: support@usscreen.com.
Support hours: 7:00am to 8:00pm Monday through Friday
9:00am to 3:00pm Saturday
(Mountain Standard Time) USA

Note: Arizona does not observe "Daylight Savings" in the US. In the summer months, Arizona is on the same time as California.

Turn Your T-Jet3 OFF at Night

Turn OFF the machine at night using the *Power Button*. Wait for the printer to completely power down (print carriage will dock onto the capping station), then turn off the main Power Switch located next to the AC cord. *DO NOT use a power strip to turn off your printer.*



Note: Cover your T-Jet3 when not in use.

Perform head cleanings every morning and at the end of the shift

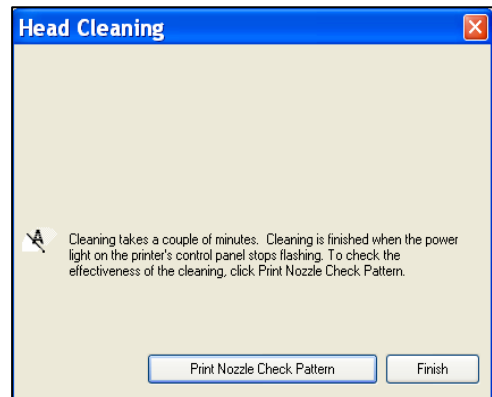
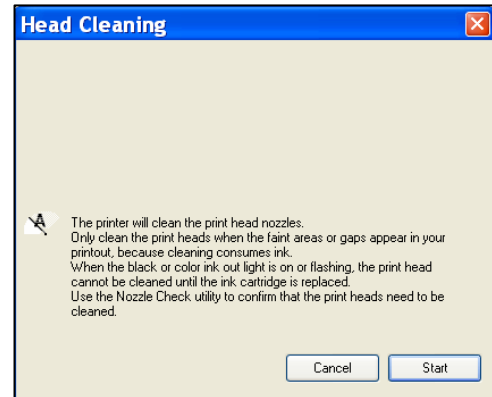
After turning on the machine at the start of the day, perform 3 to 4 head cleanings. A shortcut is to press and hold the *Ink* button for three seconds to initiate this process. The preferred method is to use the *Epson Cleaning Utility* in the Epson driver. Perform head cleanings at the end of a shirt run and definitely at the end of each day.



Running the Head Cleaning Utilities

1. Make sure your printer is ON, but not printing, and all of the red ink lights are off.
2. In Windows™: Right-click the printer icon on the bottom right hand corner of your screen (*Task Bar*) and select *Head Cleaning*. If the printer icon is not showing, click the *Start* button. Go to *Settings>Printers and Faxes*, and click to open. Right click on the Epson Stylus Photo R1800 icon and select *Printing Preferences*. From within the *Print Preferences* window, select the *Maintenance* tab.
3. Follow the on-screen instructions. Cleaning will take about 45 seconds, during which time the printer makes noise and the *Power* light and the red *Ink* lights will flash.

You should never turn off the printer while the power light is flashing! This may damage the printer. However, you can do head cleanings at any time, even when the printer is in the middle of printing a job. It will pause its printing, clean the heads and then resume right where it left off! Since the Head Cleaning cycle also wipes the bottom of the head, it is recommended to do head cleanings if you start to see drops of ink on garments or if the head comes in contact with a garment.

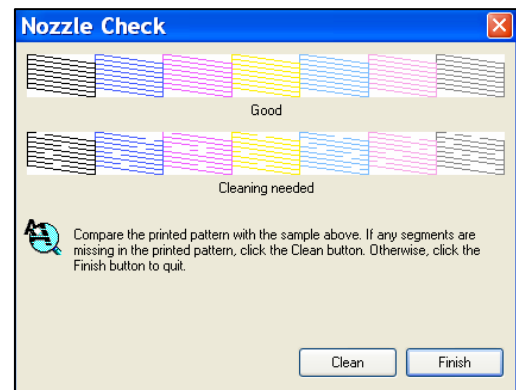
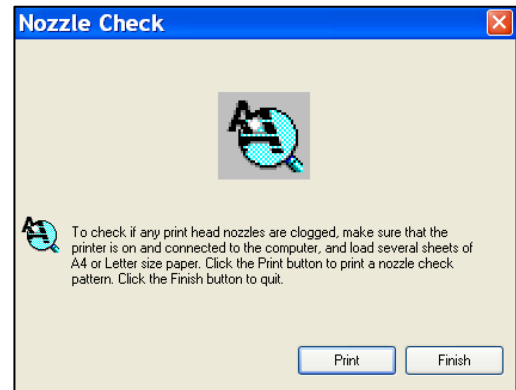
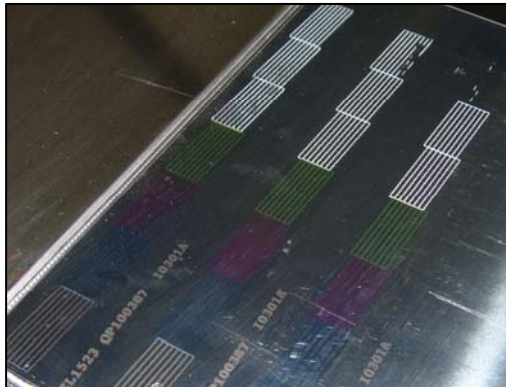


- When both the power light and the ink lights stop flashing, perform a Nozzle Check. You will need a few sheets of letter size paper OR clear inkjet film for this purpose. It is hard to see the white ink on white paper when doing a nozzle check, so the film is a better choice.

Lay the paper or film on top of the Garment Holder, butting up against the zero point of the bed.

Next, click *Print Nozzle Check Pattern* in the *Head Cleaning* dialog box and follow the on-screen prompts.

- After the *Nozzle Check Pattern* has printed, check to see if the lines have any gaps or bands in them. If the *Nozzle Check Pattern* has no gaps or bands, click *Finish*. If the *Nozzle Check Pattern* does have gaps or bands, click the *Clean* button to clean the heads again.



For serious clogs you may have to run this routine DOZENS of times. Doing this will use a lot of ink but will generally clear even badly clogged heads. You can also turn off the printer and place a few drops of cleaning fluid on the capping station pad and wait overnight to let the ink soften. You can try doing head cleanings again the next day.

IMPORTANT NOTE:

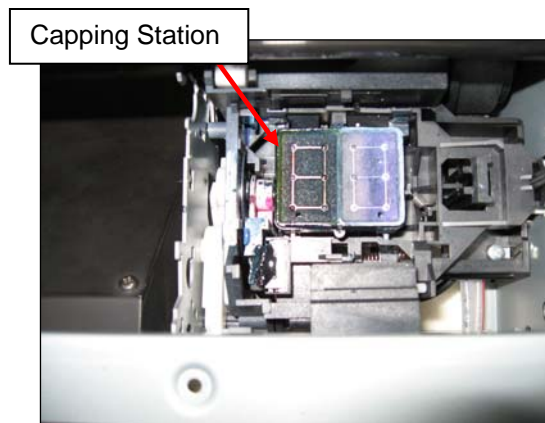
DO NOT RUN A NOZZLE CHECK WITH CLEANING CARTRIDGES.

Cleaning solution will leak out into T-Jet causing serious damage.

To purchase Refillable Cleaning Cartridges contact:
U.S. Screen Print & Inkjet Technology Sales:
8:30a.m. — 5:00 p.m. (MST) Monday — Friday
Main Line and Sales (480) 929-0640
Toll Free Order Line 1 (800) 624-6532
sales@usscreen.com

Clean Capping Station

The capping station is the rectangular piece into which the inkjet printer head seats. Make sure that the outer rubber seal is free from dried ink and garment fibers. Use a foam swab, water, glass cleaner, cleaning fluid or Isopropyl Alcohol to keep this clean.

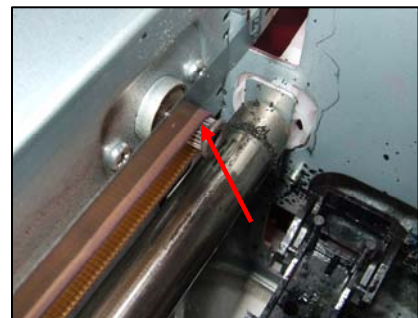


The capping station seals the print head when it is not in use. Ink residue around the edge of the capping station may keep the head from seating and sealing properly. This will cause print head clogs. Be aware that white ink will build up faster and thicker than regular colors.

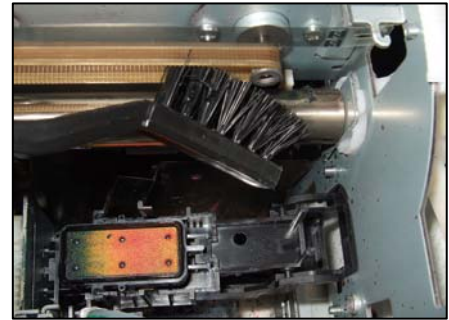
Note: When cleaning the capping station, be careful to NOT dislodge it out of position or the print head will not seat properly. If you push down on it too hard it will move off of the mount.

Cleaning Belt and Drive Gear

During normal operating conditions, lint that is coated with pretreatment can get caught in the **Print Head Belt Gear** located in the right rear inside of the machine. This lint will start to clog the belt gears and the belt will slip **causing the bed to jerk and not complete print jobs**. Periodically check this gear and if necessary, clean it with a brush or computer

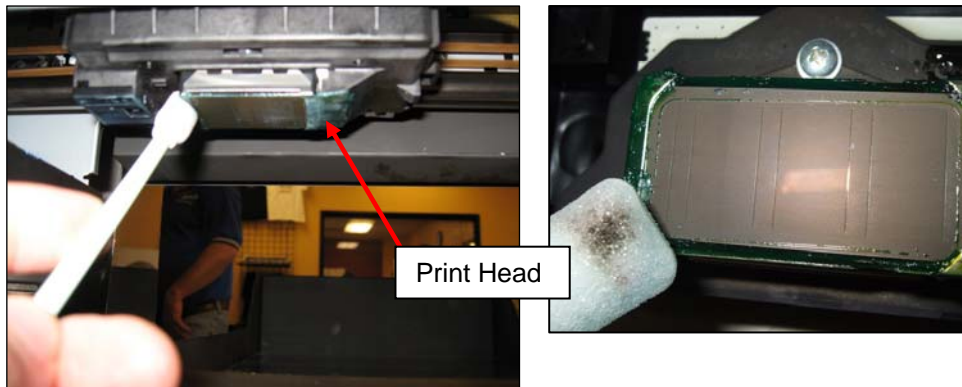


vacuum. Make sure to avoid any contact with the encoder strip as it is fragile and could get damaged. You may need to remove the Encoder Strip to get a good cleaning.



Clean Print Head

When you perform a head cleaning, the head itself is cleaned and wiped by the printer. On occasion, this may not clean away small pieces of shirt lint that collect around the bottom of the head. This excess lint can create an ink build up under the print head, causing ink to drip on the garment. The easiest way to clean the print head is to have the print bed in the load position. This will provide the needed clearance to clean the print head properly. Using a foam tip swab, water, glass cleaner, or cleaning fluid, clean any lint and ink residue off the edges of the print head. **BE CAREFUL** not to rub the bottom of the print head too hard. This is where the actual nozzles are located and they can be easily damaged.



Clean Encoder Strip

1. Press the Ink button to move the print carriage off of the capping station. Manually move the carriage to the center of the print bed. This will allow you to clean the capping station side of the encoder strip.
2. You can use foam-tipped swabs, water, glass cleaner or cleaning fluid, but for best results use Isopropyl Alcohol Pads. Do NOT use Rubbing Alcohol pads. Wrap the Alcohol Pad around both sides of the Encoder strip and move the Pad in both directions. If the pad becomes black then use a new pad and clean the Encoder strip again. Press the Ink button again to move the print carriage back to the capping station. Clean the rest of the encoder strip.



3. Let the Encoder strip AIR DRY.

Note: The Encoder Strip is actually CLEAR with small marks on it. Be careful to NOT scratch it or the sensor will not read it correctly. Only use FOAM TIP cleaning swabs or Isopropyl Alcohol Pads when doing any maintenance or cleaning inside your T-Jet3.

Check ink levels

Visually check the ink levels in the bulk ink bottles. If the bulk ink levels are topped off above the full line, ink might start to drip from the print head. If the level is too low, it is possible that the ink can siphon from the ink tubes back into the ink bottles.

