

11 Easy Steps to a Successful download

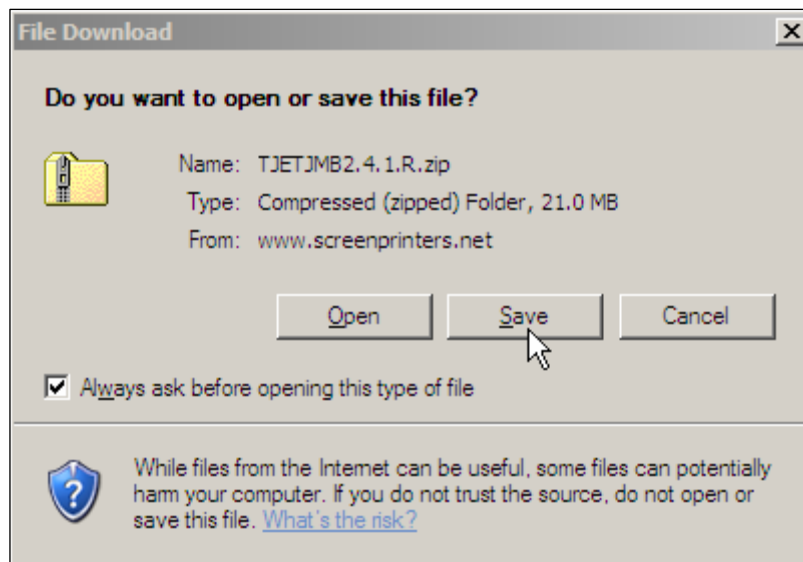
Loading – Original FastARTIST Print Modes for FastINK2 users only

Please Do Not use original FastARTIST print modes when printing with FastINK3 as this will cause a shift in color output.

As FastRIP 9.0 now offers the ability to print from other Windows graphic applications, new print modes have been developed to compliment version 9.0. In the previous FastRIP version 8.5, the print modes available were designed specifically for FastARTIST, due to the fact that FastARTIST was the only application that would print to FastRIP. FastRIP 9.0 offers new enhanced print modes while achieving better color accuracy for both FastRIP and Windows applications.

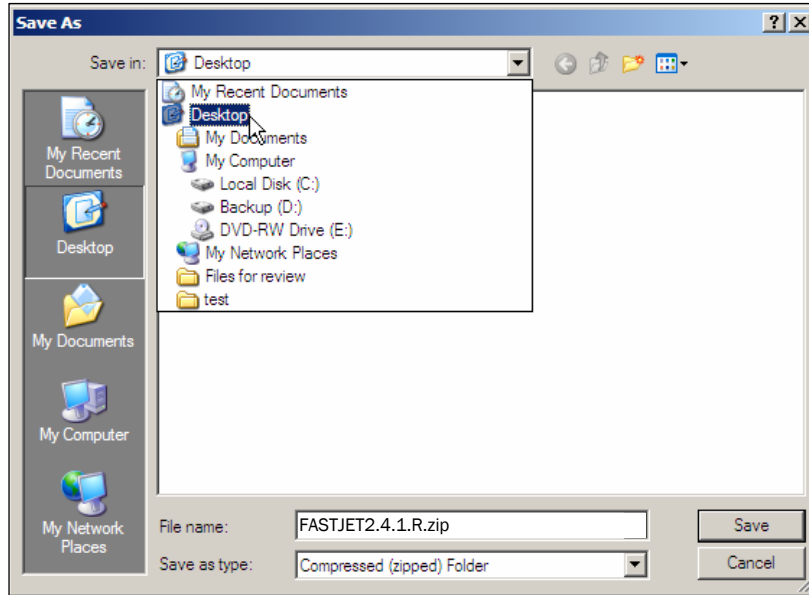
Customers have recently noticed that prints using the new enhanced print modes are coming out slightly darker than the previous 8.5 print modes. In certain circumstances this may not be acceptable as we understand the need for print consistency. By downloading the Original FastARTIST Print Modes package you will not only have access to the new enhanced print modes but all the 8.5 print modes you have become accustomed to. Please note that the Original Print Modes will only be available for use through FastARTIST.

1. Click the link that applies to your location (US – United States)
2. A screen will pop up giving you an option to open the file or to save it to a disk. Click Save.

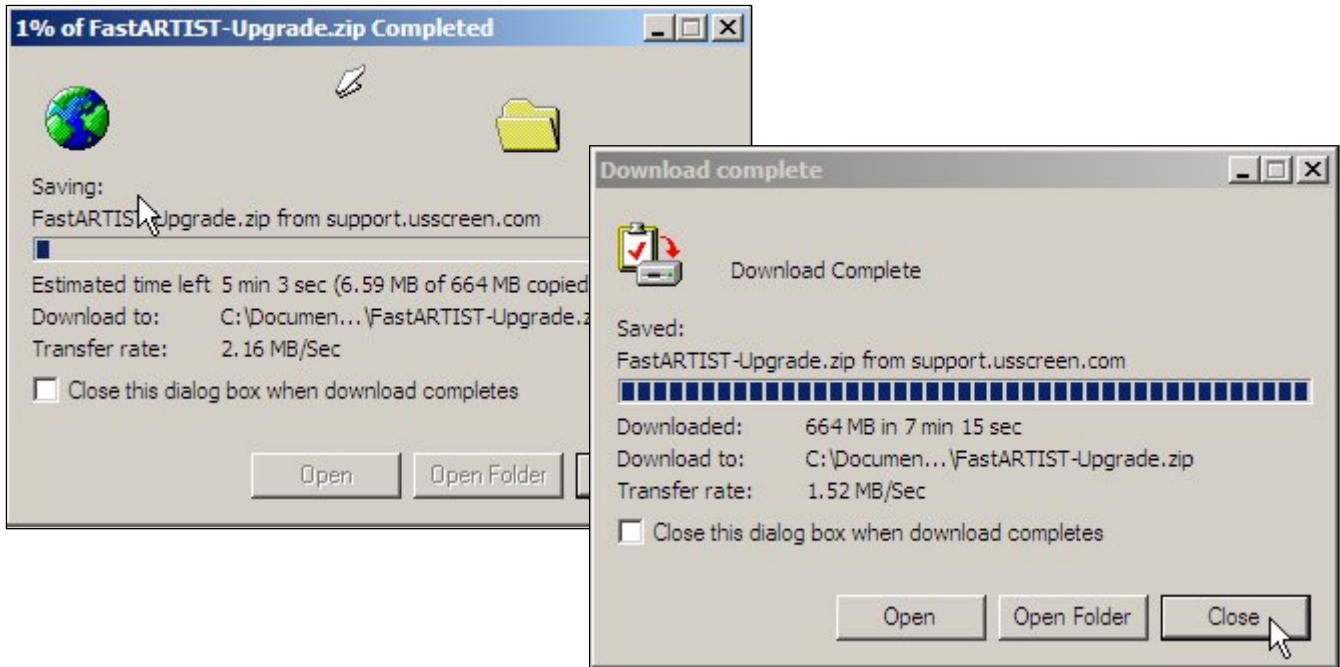


FastARTIST 1.5 / FastRIP 9.0
Original FastARTIST Print Modes

- 3. A Save As window will pop up for you to select where to save the file. Save the file to the Desktop. To do this, click on the down arrow located at the top of the window in the drop-down box, click *Desktop*, click *Save*.



- 4. Your download will begin. Depending on your connection speed, this download may take a long time. When the download is complete, a window may pop up telling you so. Simply click *Close*. Minimize your email window.



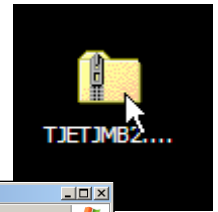
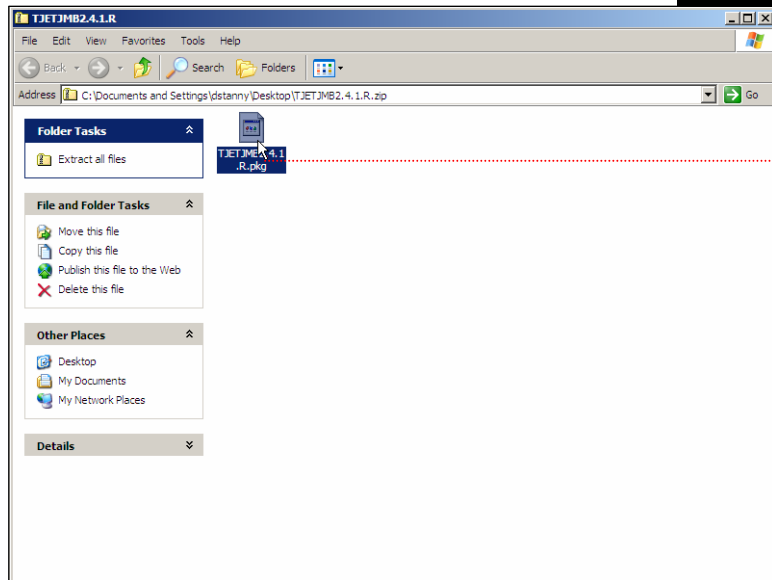
5. A Zip folder containing the original print modes is now located on your desktop. The package file must be extracted from this zip folder and placed on your desktop in order to properly load the file into FastRIP.

a) Right click on the zip file located on the desktop

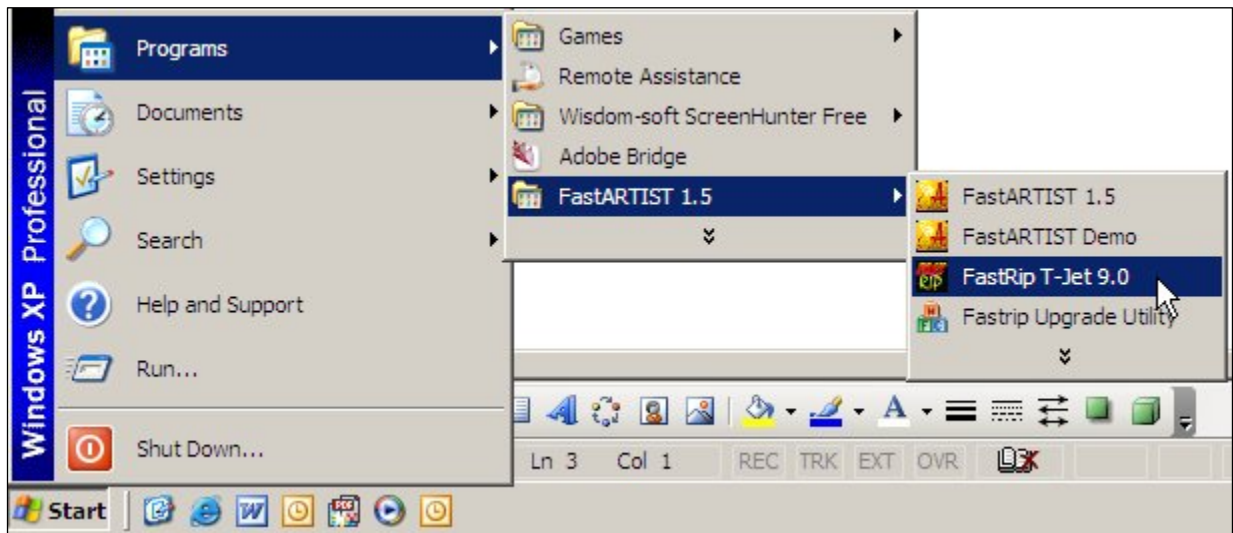
b) Click on *Open* from the drop-down menu.

c) This will now open a window showing the contents of the zip file.

d) With the zip file window not fully maximized - Left click holding the mouse button down drag the .pkg file over onto your desktop.

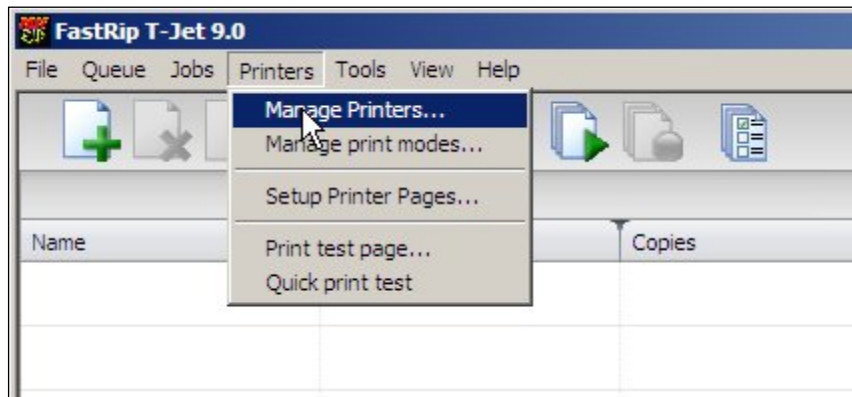


6. Click the Windows *Start* button, click *Programs*, move your mouse over *FastARTIST 1.5*. There will be a drop-down menu that appears to the right, click *FastRIP T-Jet 9.0* launching the application.

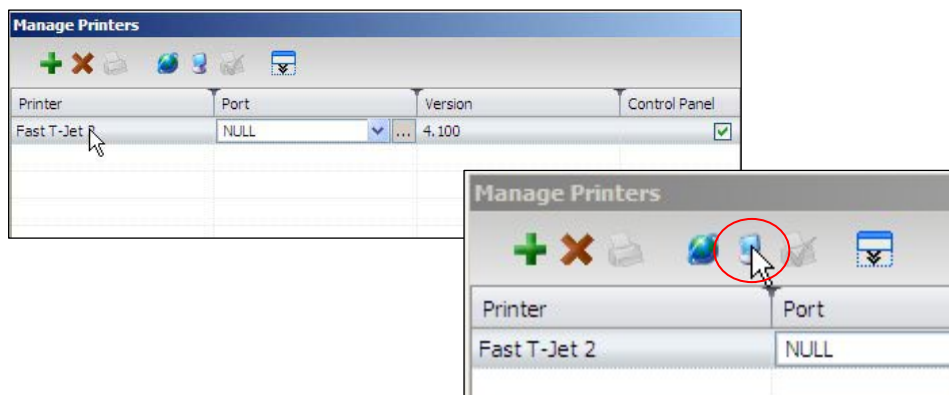


FastARTIST 1.5 / FastRIP 9.0
Original FastARTIST Print Modes

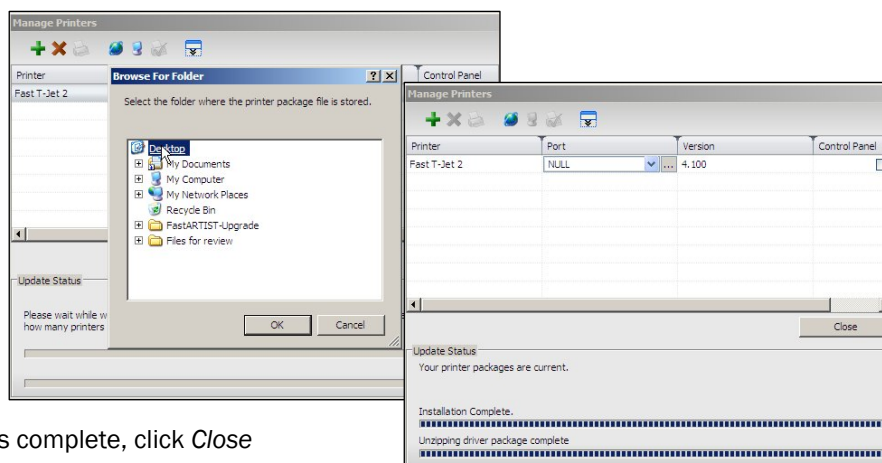
7. From the FastRIP 9.0 top menu bar, click *Printers*, click *Manage Printers*



8. Click the Fast T-Jet 2 printer in the Manage Printers window. Then from the Manage Printers tool bar click on the *Check for local updates* icon shown below.

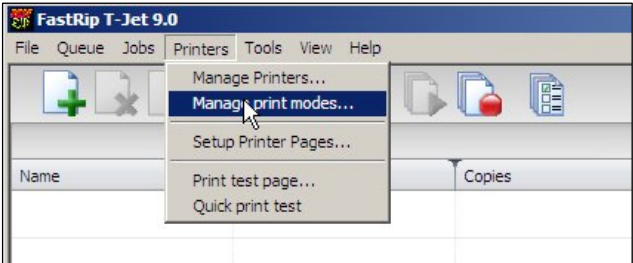


9. The *Browse For Folder* window will now display asking for the location of the FASTJET2.4.0.R Original Print Modes file. Select *Desktop* then click the *OK* button. FastRIP will now locate the Original Print Modes file placed on the desktop and begin the loading process.

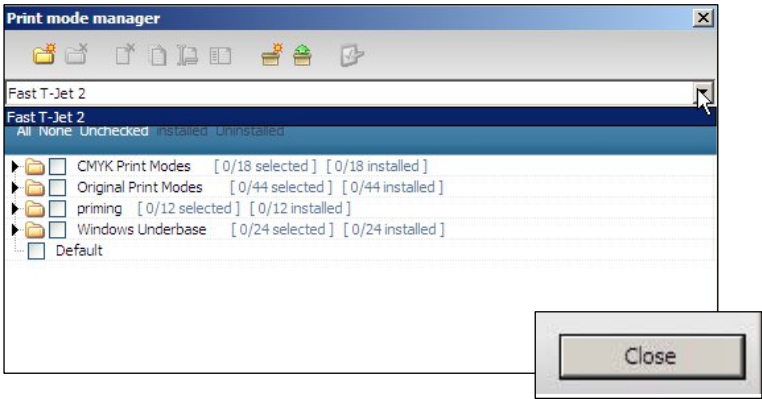


When the installation is complete, click *Close*

10. The Original Print Modes are now loaded into FastRIP and are available for use at this time. If you would like to look at the different print modes you can do so by clicking *Printers*, then *Manage Print Modes* from the FastRIP top menu bar.



11. From within the Print Mode Manage, select Fast T-Jet 2 in the drop-down dialog box. The four folders containing all the different print modes will be displayed including the Original Print Modes as shown below. Click the black triangle to the left of the folders to view folder contents. When finished click *Close*.



Please note: The .pkg and zip file can be deleted from your desktop after installation.