

# Photo Parts List

## T-Jet 1 & 2

---

---

### Bulk system

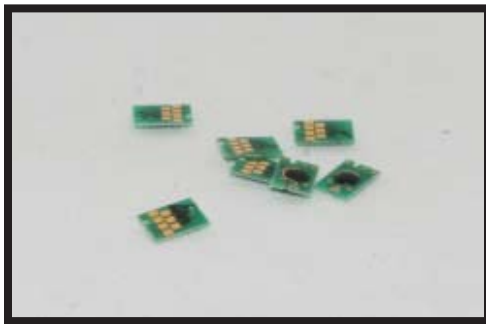


Bulk Chain with Plastic Tubing-  
TJETSTDBULKSYSTEM

Description: Chain system and hoses are part of the bulk system. That connects to cartridges and to ink bottles on the outside. The system is held up by a metal bracket and screwed on to the machine. The black chain acts like a tread that houses the hoses.

Location: Attached to top of printer.

PART #- TJETSTDBULKSYSTEM \$125.00



Cartridge Chips C,M,Y,K,LM,LC,LK  
TJETSTDCARTCHIP

Description: Cartridge chips let you know if you are low on ink or even out of a certain color. If one of these chips go out the machine will give you a small LED light that will let you know what color is out.

Location: Chips are found on every cartridge.

PART #- TJETSTDCARTCHIP \$8.40



T-Jet Waste Bottle with valve

Description: Waste tank bottle is for the waste ink that gets dumped after a head cleaning or printing. It also has a valve that stops any siphoning from accruing.

Location: Bottle is installed in the back it is held on by a metal holder.

PART #- TJETSTDWASTEBTL \$8.40



Bulk Cartridges with L fittings-  
TJSTDREFILLCARTS

Description: Cartridges are used for printing other and for cleaning. Cartridges have fittings that are glued on they contain a plastic viewer that lets you see if it needs to get reprimed.

Location: Ink cartridges are in the printer head and are positioned in corresponding slots.

PART #- TJSTDREFILLCARTS \$49.95



Bulk Bottles C,M,Y,K,LM,LC,LK  
TJET250MLRECT and CONS500MLSQUARE

Description: Ink bottles are containers for the ink. The bottles will hold C,M,Y,K, and W. These bottles will hold 250ml and the W will hold 500ml.

Location: Bottles are held on the side of the printer by a holding tray.

PART #- TJET250MLRECT and CONS500-  
MLSQUARE \$4.00



Waste Tank Holder-TJETWASTEBRACKT

Description: Waste tank bottle tray will hold the waste bottle in its place.

This is a non adjustable tray that will hold a 500ml bottle.

Location: Tray is in the back right hand side of the machine.

PART #- TJETWASTEBRACKT

\$0.00



T-Jet Height bar-TJETADJUSTMENTGUIDE

Description: Height bar helps with the elevation of the bed to the printer head. You will have a specific height that you need to have between the head the bed. This will bar will help you set the standard.

Location: Height bar comes with the Fast version 1000-1200.

PART #- TJETADJUSTMENTGUIDE  
\$19.95



Capping Station-TJETCAPASSEMBLY

Description: The capping station is the docking device for the printer head. This station is one of the most important ones as it keeps the printer head from drying out and clogging up.

Location: Capping station is on the right hand side of the machine.

PART #- TJETCAPASSEMBLY  
\$15.75

Photo Parts List  
T-Jet 1 & 2



Bulk System Tray-TJET2BULKTRAY

Description: This tray holds all the ink bottles on the side of the T-Jet. This tray is also adjustable to get the ink bottles to the right height and to get the ink flowing through the ink lines. The adjusting on the tray is important because it can stop problems with “Starvation or Siphoning problems.

Location: Tray is on the side of the printer and can hold 250ml ink bottles and one 500ml  
PART #-TJET2BULKTRAY  
\$18.00



Tray lip holder

Description: This holds up the entire bulk tray.

Location: This part goes on top of the bulk system tray.

PART #-TJET2TRAYREARPLATE  
\$ N/A



Encoder wheel sensor-

Description: This sensor is for reading the encoder wheel on the side of the machine. The sensor is in charge of placing the bed in the correct position for the printer head to start.

Location: This sensor is on the side of the printer

PART #-TJETLOGWHEELSENSOR  
\$ N/A



Head Cable Set-TJETHEADCABLESET

Description: Ribbon cable or “Head Cable” is a data transfer cable with pins at the end. This cable is very delicate it needs extra care when replacing it.

Location: This cable extends from the printer head and carriage to the boards in the back of the machine.

PART #-TJETHEADCABLESET  
\$32.00

## Epson Parts



Carriage Assembly-TJETCARRIAGEASSEMBLY

Description: Printer carriage holds the printer head. It also holds the prongs for the cartridge chips. The carriage has a sensor on the back that reads the encoder strip, it also has a ribbon cable slot for information.

Location: Carriage is what surrounds the printer head.

PART #- TJETCARRIAGEASSEMBLY  
\$75.00



Timing Belt-TJETTIMEBELT

Description: Timing belt is in charge of moving the carriage back and fourth. It is driven by a gear on the right hand side of the printer. It also has pressure bolt on the left side that holds it in place and times it accurately.

Location: Belt is underneath the encoder strip

PART #- TJETTIMEBELT  
\$13.95



T-Jet 2 Pump Assembly-TJET2PUMPASSEMBLY

Description: The pump assembly sucks the ink out of the printer head. Most importantly this is the assembly that is in charge of doing the head cleaning. It also has a squeegee that wipes away the ink from the head.

Location: Pump is beside the capping station.

PART #- TJET2PUMPASSEMBLY  
\$35.25



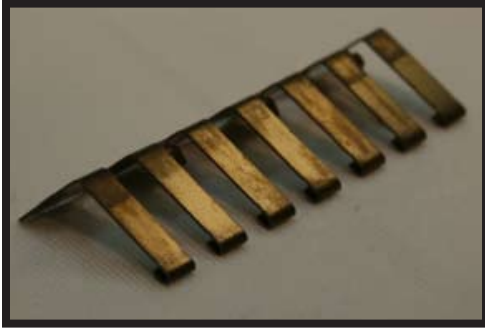
Squeegee cleaner C-TJETCLEANERHEADC

Description: This is wiper one of two. This is the rubber piece that wipes of the extra ink after it does a head cleaning. This part acts like a squeegee.

Location: The Rubber has a curbed edge that faces the bed. This squeegee is in the pump assembly.

PART #- TJETCLEANERHEADC  
\$7.00

Photo Parts List  
T-Jet 1 & 2

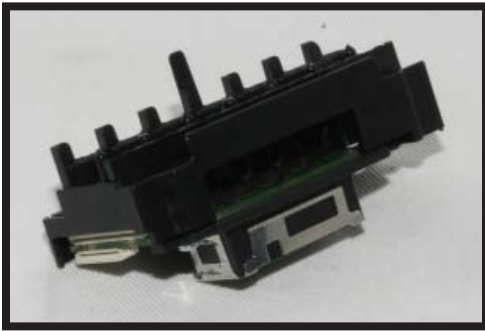


PART #- MISCTJETSTDCOPPERSRPINGA

Description: Copper spring for printer cartridges this spring hold the cartridges up. This clip goes underneath one other clip that supports it.

Location: This is on the printer carriage and is right over the printer head.

PART #- MISCTJETSTDCOPPERSRPINGA  
\$0.00



PART #-TJETSTDHEAD

Description: The printer head is what prints on the garment or the non-textile surface. The printer head has multiple nozzles that are cut into sets of colors. C,Y,M,K,LC,LM, and LK.

Location: Is on the inside of the printer carriage.

PART #-TJETREFURBHEAD  
\$295.00



PART #-MISCTJETSTDCOPPERSRPINGB

Description: Copper spring for printer cartridges this spring hold the cartridges up. This clip goes over one other clip that supports it.

Location: This is on the printer carriage and is right over the printer head.

PART #-MISCTJETSTDCOPPERSRPINGB  
\$0.00



PART #-TJETEXTENSIONSPRINGS

Description: This spring holds the encoder strip. It needs to keep a certain pressure otherwise the printer carriage will not be able to read the encoder strip.

Location: Spring is on the left hand side end of the encoder strip. (viewing the printer from the front)

PART #-TJETEXTENSIONSPRINGS  
\$0.42

Photo Parts List  
T-Jet 1 & 2



Power Board

Description: Power board is in charge of giving the printer it's power. This board has a fuse that will blow out if the machine is not plugged into a surge protector.

Location: This board is housed in the back of the printer near the transformer

PART #- TJETPOWERSUPPLY  
\$125.00

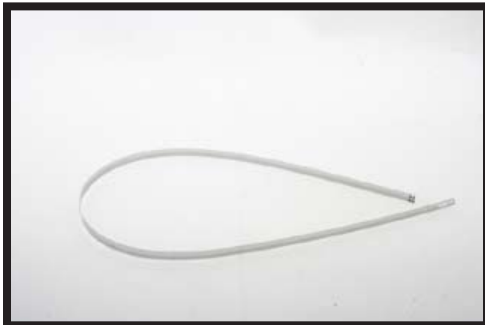


Control Board

Description: Control board or Mother board is the brain of the printer and is what makes the printer do everything from a head cleaning to the actual printing.

Location: This board is in the back of the printer. It has the connections for the USB port the Firewire and power.

PART #- TJETMAINBOARD2200  
NOT FOR RE-SELL

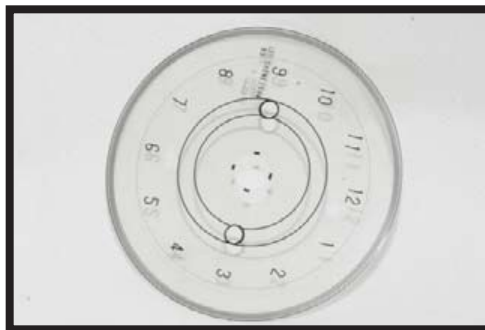


Encoder Strip

Description: The Encoder strip is very important and is one of the items in the printer that needs to get cleaning on a regular basis if you do not have a fan.

Location: This part is right above the belt drive and hooks to both sides of the printer

PART #- TJETENCODERSCALE  
\$11.95

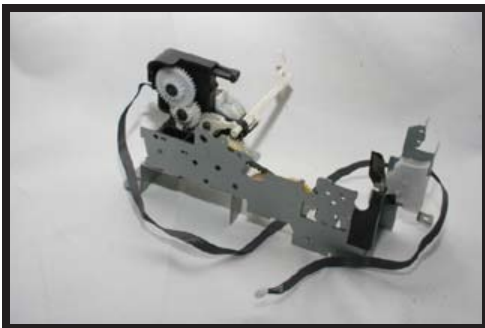


Encoder Wheel

Description: The encoder wheel is on the side of the machine and gets read when the machine turns on and the bed moves forward or back. This wheel is read by a small sensor that is on the side of the printer.

Location: Wheel and sensor is on the left side of the printer (viewing the printer from the front)

PART #- TJETLOGWHEEL  
\$0.00



TJET2CLEANINGGEARASSEMBLY

Description: Capping Station gear system this system drives the pump assembly as well as the squeegee

PART #- TJET2CLEANINGGEARASSEMBLY  
\$ N/A



TJET2COUNTER

Description: The counter is a device that makes the printer take multiple passes. This device must be connected correctly otherwise the printer bed may malfunction.

Location: This device is set on right hand side of the printer (viewing printer from the front)

PART #- TJET2COUNTER



TJET2SENSORFRONT

Description: Sensor makes the printer bed stop at the load and eject position. This sensor makes sure the printer bed stops at the correct moment it has to, to start the printer.

Location: This sensor is in the machine near the center base of the printer.

PART #- TJET2SENSORFRONT



TJETFLUSHINGPADSET

Description: These sponges are made to soak up and excess ink after the printer is done with a head cleaning.

Location: These pads are on the opposite end on the capping station.

PART #- TJETFLUSHINGPADSET



## Non Epson Parts

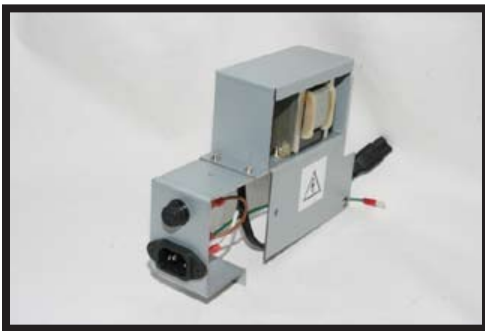


TJETTRANSFORMER

Description: The converter is what regulates power to the circuit boards on the machine. It protects the boards from getting any power spikes that may fry them.

Location: This printer is on the back side of the printer on the right hand side. It will be next to the power transformer.

PART# TJETTRANSFORMER  
\$ N/A

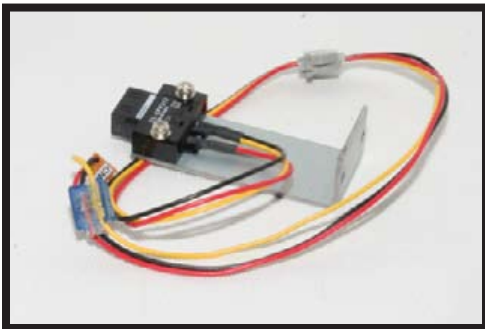


TJETTRANSFORMERASSEMBLY

Description: This is the transformer for the printer it delivers the power for the printer to function. It has a fuse connected to it and it was primarily used to regulate the power.

Description: The transformer is on the back of the machine on the bottom right. (Follow the power plug access)

PART # TJETTRANSFORMERASSEMBLY  
\$ N/A



TJET2SENSORBACK

Description: Sensor makes the printer bed stop at the load and eject position. This sensor makes sure the printer bed stops at the correct moment it has to, to start the printer.

Location: This sensor is in the machine near the center base of the printer.

PART # TJET2SENSORBACK  
\$ N/A



TJETBW30BOARD

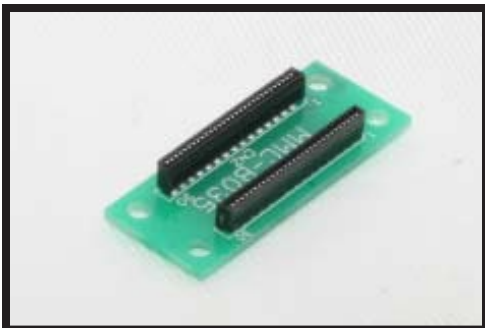
Description: This is a power circuit board and is also part transformer.

This board is also known as a power booster since it delivers power directly to the sensors with out taking away from the main power.

Location: This board (viewing the printer from the back side) is near the mainboard. Look towards the front of the printer and you should see the white base of the board.

PART # TJETBW30BOARD  
\$ N/A



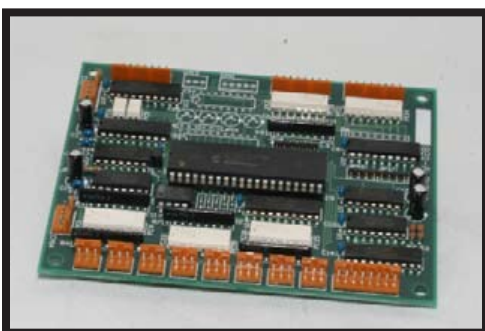


TJETHEADCABLEBOARDSM

Description: This is 1 of 2 relay boards that deliver information to and from the mainboard.

Location: This board is clipped on the back of the printer. Both boards are next to each other.

PART #TJETHEADCABLEBOARDSM  
\$ N/A

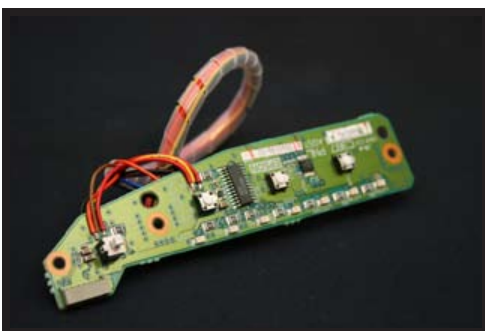


TJET2BEDMOVEMENTBOARD

Description: This board controls the printer bed and is also the control board for the counter that is fitted.

Location: (view the printer from the front) This board is in the front of the machine. It should be one of the first boards that you can see.

PART #TJET2BEDMOVEMENTBOARD  
\$ N/A



TJET2C387BOARD

Description: This is the control board for the printer it was mainly used for the original Epson 2200 printers. This is now used for resetting the printers and testing out the machines functions.

Location: For the T-Jet 1 this board is on the right hand side (frontal view). On the T-Jet 2 the board is sitting right under the ink indication lights.

PART #TJET2C387BOARD  
\$ N/A

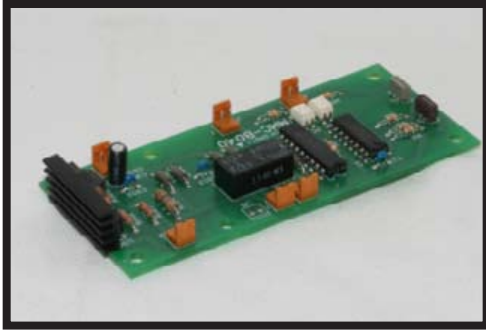


TJET2VERTICALWHEELSUPPORT

Description: These are the nuts and guide wheels that guide the bed in and out of the machine.

Location: There should be a total of 8 guide wheels.  
PART #TJET2VERTICALWHEELSUPPORT  
\$ N/A

Photo Parts List  
T-Jet 1 & 2



TJET2MMCBBOARD-MMCB040

Description: Bed control board this controls the bed motor and switches the motor back and forth as needed

Location: This board is on the (view front printer) right hand side towards the front of the printer.

PART #TJET2MMCBBOARD-MMCB040  
\$ N/A

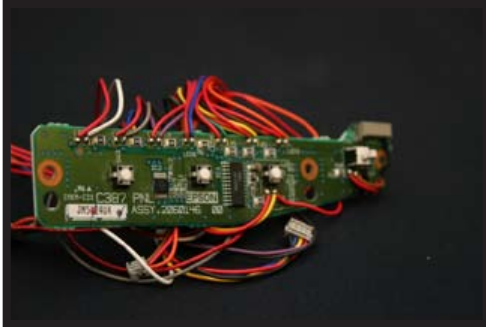


TJET2INTERFACEBOARD

Description: This is the button controls that will load, eject, clean printer head, and turn on and off the printer.

Location: This control panel is on the right hand side (view front of printer)

PART #TJET2INTERFACEBOARD  
\$ N/A



TJET2C387BOARD

Description: This is the control board for the printer it was mainly used for the original Epson 2200 printers. This is now used for resetting the printers and testing out the machines functions.

Location: For the T-Jet 1 this board is on the right hand side (frontal view). On the T-Jet 2 the board is sitting right under the ink indication lights.

PART #TJET2C387BOARD  
\$ N/A



TJET2HORIZONTALWHEELSUPPORT

Description: These are the nuts and guide wheels that guide the bed in and out of the machine.

Location: There should be a total of 8 guide wheels.

PART #TJET2HORIZONTALWHEELSUPPORT  
\$ N/A

Photo Parts List  
T-Jet 1 & 2



TJETCLEANERHEADB

Description: This is wiper one of two. This is the felt piece that wipes of the extra ink after it does a head cleaning. This part acts like a cleaning wipe.

Location: The felt has no curved edge that faces straight up away from the printer. This squeegee is in the pump assembly

PART # TJETCLEANERHEADB  
\$7.00  
\$ N/A



TJET2HEIGHTSENSORSIDEA

Description: This is a motion sensor that get that tells if the printer bed has something in the way of the printer. This sensor will stop bed movement as soon as it picks something up.

Location: These sensors are on both the right and left side of the printer. They should be right above the front part of the bed.

PART #TJET2HEIGHTSENSORSIDEA  
\$ N/A